



Full Subject-Based Banding (Full SBB)

7-Jan-2025

Rationale of Full SBB

Full SBB aims for students to:



Have **greater ownership of their learning** according to their strengths, interests, abilities, talents and learning needs



Develop a **growth mindset and an intrinsic motivation** to learn for life



Have **more opportunities to interact with friends** of different backgrounds, strengths, interests, abilities and talents

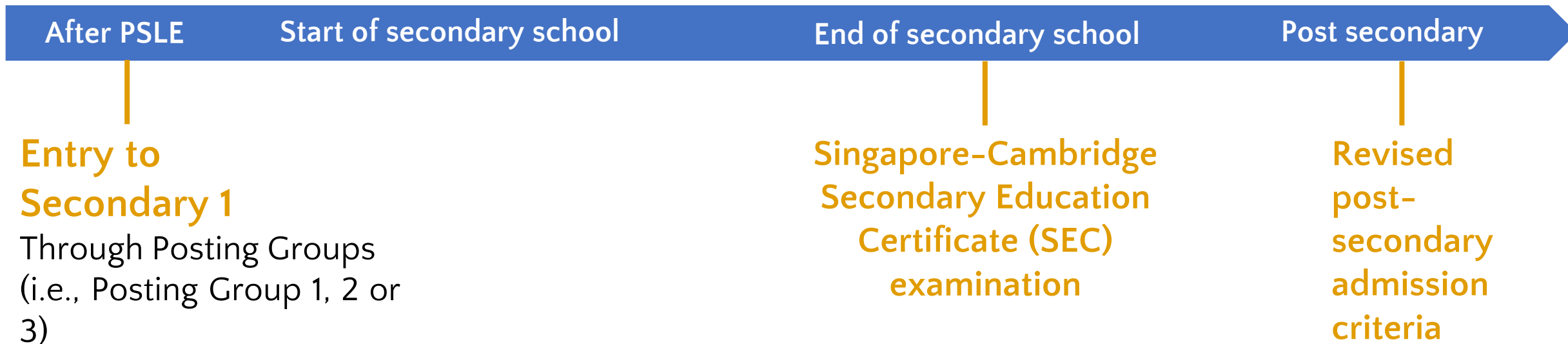


Have **more options for post-secondary pathways**, while ensuring they have strong fundamentals and can thrive in their chosen pathway

Secondary school experience under Full SBB

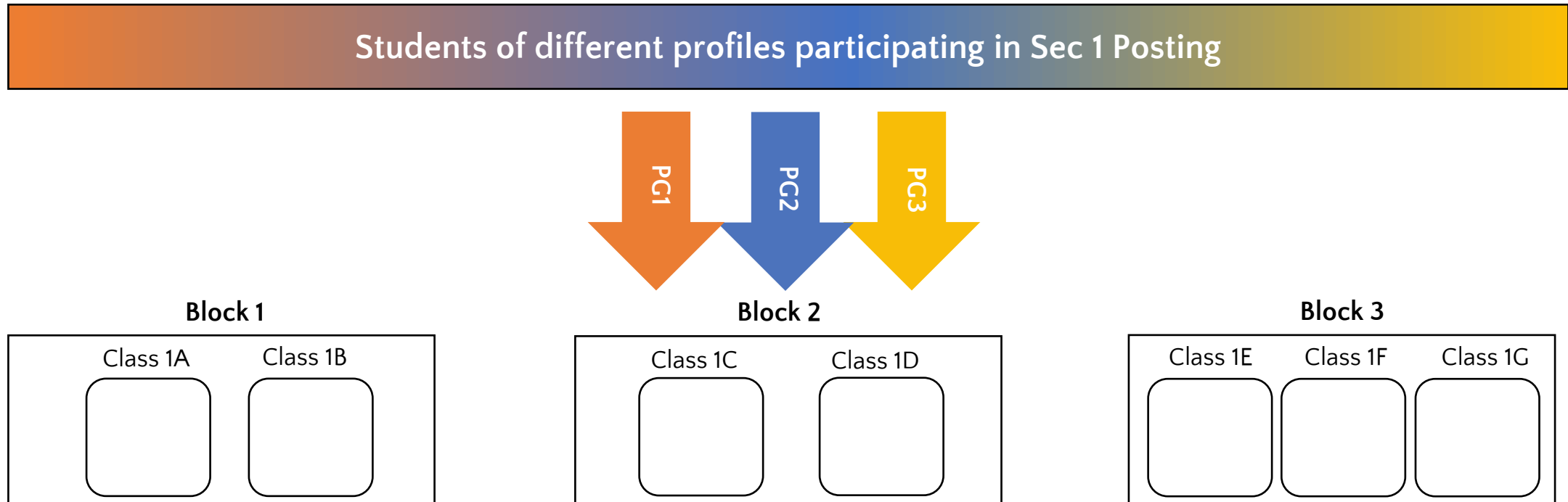
Secondary school experience

1. Mixed form classes upon entering secondary school
2. Common curriculum subjects at lower secondary
3. Subjects to be offered at G1, G2 or G3, mapped from the standards of the N(T), N(A) and Express respectively
4. Greater flexibility to offer subjects at various subject levels
5. Shift away from stream-based subject offerings



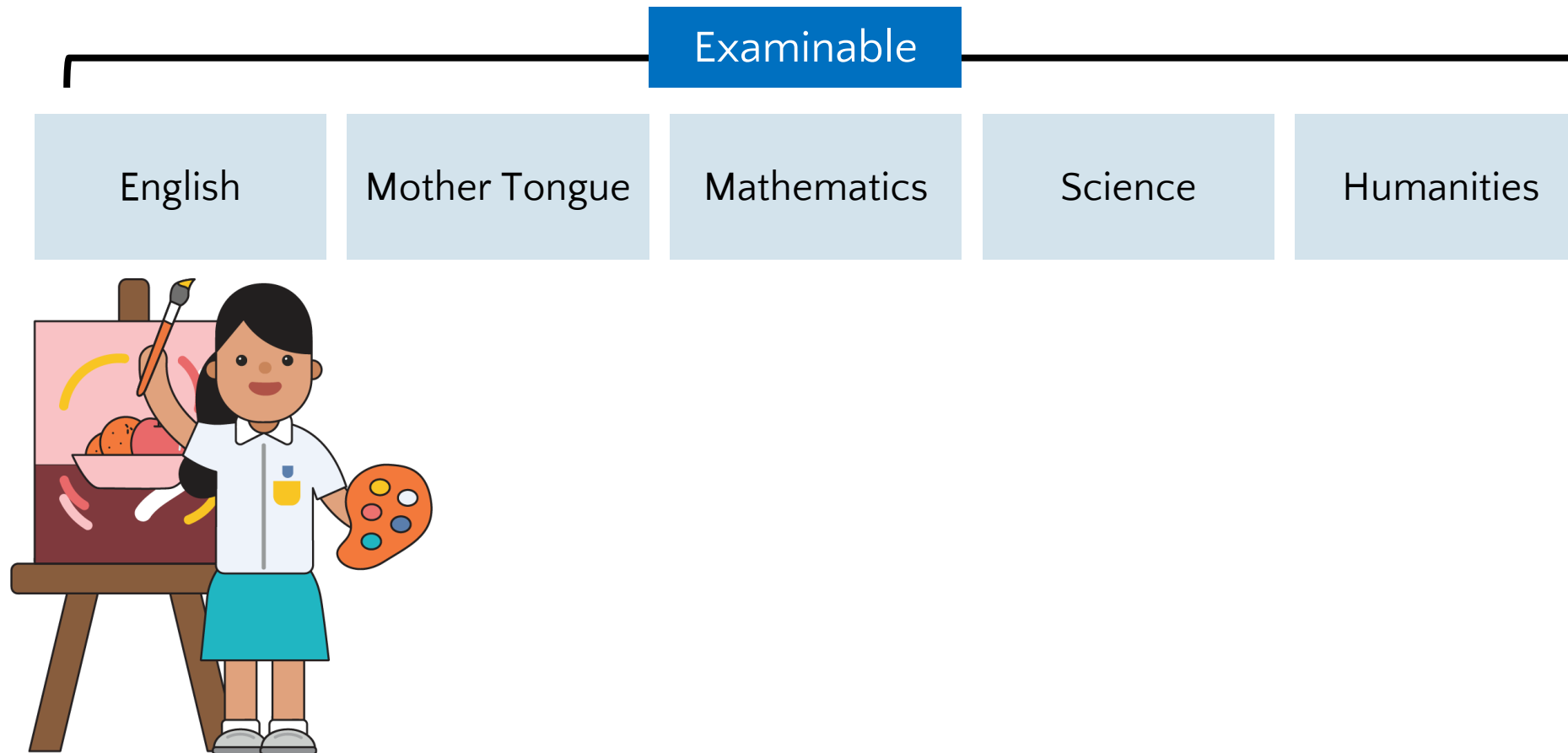
Mixed Form Classes in Lower Secondary

- With Full SBB, students will be placed in mixed form classes in lower secondary.
- More opportunities for students to interact with other students of different strengths.



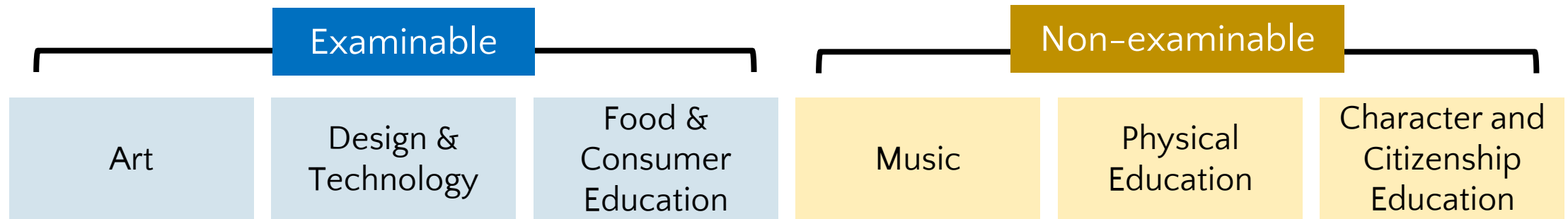
Core Curriculum Subjects

- Students will take five core curriculum subjects with their classmates:



Common Curriculum Subjects

- Students will take six common curriculum subjects with their form class classmates:



- These subjects take up approximately one-third of curriculum time, giving students time to interact with classmates of different strengths and interests.

Lower Secondary Subject Offerings

Examinable subjects	PG1	PG2	PG3
English Language			
Chinese/ Malay/ Tamil Language			
Higher Mother Tongue			
Mathematics			
Science			
Humanities (Geography)			
Humanities (History)			
Humanities (Literature in English)			
Art			
Design & Technology*			
Food & Consumer Education*			
Non-examinable subjects	PG1	PG2	PG3
Character and Citizenship Education			
Physical Education			
Music			
G1 Humanities (Social Studies, Humanities Exposure Modules)			

In-School Progression

The changes are part of broader efforts by MOE to:

- allow students to have greater ownership of their learning according to their strengths, interests and learning needs, and
- encourage students to develop a growth mindset and an intrinsic motivation to learn for life.



*Under Full SBB, **the progression of students**, will be guided by a **common academic requirement** that applies at the **end of Secondary 2 and Secondary 3**.

Academic requirement:

Pass (a) EL and 2 subjects *or* (b) at least half the total number of examinable subjects offered.

In-School Progression

What about Secondary 1 students?

At the end of S1, students will progress to S2 and offer subjects at the same subject levels the following year **without** needing to meet the **common academic requirement**.

- This eases the transition of a student from primary to secondary school and provides time for students to adjust to the curriculum.

*The **common academic requirement** will be a proxy indicator to check that the students have acquired the necessary foundation to cope with Secondary 2 demand.



Subject Level Flexibility Throughout Secondary Education

- Beyond the start of Secondary 1, students may adjust their subject levels across their secondary school journey.
 - E.g. Students can also offer English Language, Mathematics, Science and/or Mother Tongue Languages at a more demanding level from Secondary 2.

Current subject level	School-based results	Option to offer subject at
G1	≥75% in the specific subject	G2 starting from Secondary 2
G2	≥75% in the specific subject	G3 starting from Secondary 2

Subject Level Flexibility Throughout Secondary Education

- Beside English Language, Mathematics, Science and Mother Tongue Languages Humanities can also be offered at a more demanding level from Secondary 2.

Current subject level	School-based results	Option to offer subject at
G1	<ul style="list-style-type: none"> ≥ 75% overall in G1 English Language (or ≥50% overall in G2 English Language); AND A Pass with Distinction grade for both G1 Humanities (Social Studies component) Performance Tasks in Semesters 1 and 2. 	G2 starting from Secondary 2
G2	≥75% in the specific Humanities subject	G3 starting from Secondary 2

POST-SECONDARY OPTIONS FOR FULL SBB

**From 2028,
more post-secondary options
will be available.**

Students taking at least	POST-SEC PATHWAYS					
	ITE Year 1 Entry	ITE Year 2 Entry	Polytechnic Foundation Programme (PFP)	Polytechnic Year 1	Millennia Institute	Junior College
6 G3 subjects	✓	✓	NEW ✓	✓	✓	✓
5 G3 subjects	✓	✓	NEW ✓	✓	✓	
4 G3 + 1 G2 subject	✓	✓	NEW ✓	NEW ✓		
5 G2 subjects	✓	✓	✓			
4 G1 subjects	✓	NEW* ✓				

*For students who meet ITE's Year 1 academic requirements



© Ministry of Education, Singapore. All Rights Reserved.

Admission to	Aggregate Type	Subjects used	Downward Grade Mapping
JC	L1R5	6G3	Not applicable
MI	L1R4	5G3	Not applicable
Poly Year 1	ELR2B2	4G3 + 1G2	If needed, grades for subjects offered at G3 will be mapped down to G2
PFP & ITE Year 2	ELMAB3	5G2	If needed, grades for subjects offered at G3 will be mapped down to G2
ITE Year 1	Best 4	4G1	If needed, grades for subjects offered at G2 or G3 will be mapped down to G1
<p>Note: Prerequisite subjects at specific levels may apply</p>			

Source: [MOE Facebook \(2 March 2024\)](#)

5 SUBJECTS AT G3

6 SUBJECTS AT G3

Subjects at G3 required to calculate		
	L1R5 Aggregate for Junior College	L1R4 Aggregate for Millennia Institute
L1	English or Higher Mother Tongue Language	
R1	Any 1 subject from Humanities	Any 2 subject from Humanities, Mathematics or Science
R2	Any 1 subject from Mathematics or Science	
R3	Any 1 subject from Humanities, Mathematics or Science	Any 2 subjects
R4	Any 2 subjects	
R5		

4 SUBJECTS AT G3 & 1 SUBJECT AT G2

ADMISSION TO YEAR 1 OF POLYTECHNIC FOR FULL SBB

- Students will be able to offer one [B] subject at G2
- Common benchmark of four G3 subjects and one G2 subject
- If both [B] subjects are at G3, [B] subject with lower grade mapped to G2
- Required to meet the following requirements
 - Net ELR2B2 score requirements of 22 and below
 - THREE subject-specific Minimum Entry Requirements (MER)*
 - a. English Language
 - b. **2 relevant subjects from the R subject list for the associated course type**

Some examples of relevant subjects:

Possible examples	Relevant Subjects which must be offered at G3	
Humanities courses [^]	R1 or R2: Humanities or Art	
Business courses	R1: Mathematics	R2: Humanities, Art or POA
Science courses	R1: Mathematics	R2: Science or NFS
ICT courses	R1: Mathematics	R2: Science, Computing, D&T or NFS
Engineering courses	R1: Mathematics	R2: Science, Computing or D&T
Design courses	R1: Mathematics	R2: Science, Art, Computing, D&T or NFS

- The above are broad categories of courses
- Subjects listed are based on those offered by Springfield Secondary
- Please refer to relevant course page(s) on the Polytechnic websites for detailed information.

[^] Many Humanities courses may also require a C6 or D7 in Mathematics at G3, but it need not be included in ELR2B2 aggregate calculation

5 SUBJECTS AT G2

Direct entry into Year 2 of Higher Nitec course

OR

Polytechnic Foundation Programme (PFP)

Group 1 Courses	
Subjects	Grade Required
English Language	3
Mathematics / Additional Mathematics	3
One of the following relevant subjects: <ul style="list-style-type: none">• Design and Technology• Nutrition and Food Science• Science	3
Any two other subjects excluding CCA	4

Group 2 Courses	
Subjects	Grade Required
English Language	2
Mathematics / Additional Mathematics	3
One of the following relevant subjects: <ul style="list-style-type: none">• Art• Humanities• POA	3
Any two other subjects excluding CCA	4

The subject requirements above are based on information as at 31 Aug 2024, and may be subject to further updates, especially in view of the upcoming changes (from PFP Intake 2026 and 2028 respectively), that will affect the Full SBB students.

- Students in PFP will enter 1 of 3 key broad clusters, before posting to a diploma course based on interest & PFP performance:
 - I. Sciences
 - II. Design, Engineering & Technology or
 - III. Humanities, Art, Media and Business
- Students taking G3 subjects, or a mix of G2 and G3 subjects can access PFP by mapping their G3 grade to the G2 equivalent.





Supporting your child through their
Secondary School Journey

How can you support your child?



Support

Affirm

Familiarise

Empathise

How can you support your child?

- Here's how you can journey with your child:
 - **Connect with them**
 - Set aside time to listen and understand how they are coping with school and CCA, their thoughts and feelings.
 - Create opportunities outside of school that would help you and your child recognise their interests, skills, strengths and learning styles.
 - **Support them to learn for life**
 - Stay open to the possible education and career pathways that are available and be flexible in discussing these pathways with them.
 - Trust their abilities to grow to become better versions of themselves, while being careful not to project your expectations on them.
 - Encourage them to take ownership of their goals and plans.

Resources

Video – Heart to Heart Talk



<https://go.gov.sg/h2htep2>

ECCG Tips for Parents



<https://go.gov.sg/tips-for-parents>

What's next?



Secondary 1 & 2

End of Secondary 2

Secondary 3 & 4

Deciding on upper secondary subject combinations

All students will offer between 5 and 9 examinable subjects for upper secondary.

Upper secondary

Students will continue to have flexibility to offer subjects at different subject levels, including elective subjects.

What's next?

End of Secondary 4/5

Singapore-Cambridge Secondary Education Certificate (SEC) Examination

From 2027, students will sit for the new SEC examinations, with different papers for each subject level.

5th year of secondary education will continue to be available for eligible students.

- This allows them to pace their learning and possibly offer subjects at a more demanding level to access more post-secondary pathways.

Post-Secondary

Admission to post-secondary education institutes

Admission criteria have been progressively updated to recognise students taking different combinations of subjects and subject levels.

- E.g., Polytechnic Foundation Programme (PFP) has been expanded to allow access to students offering G3 subjects, or a mix of G2 and G3 subjects.



More updates will be shared in the near future.

Thank you

Any question?
Scan me to ask





Find out more about Full SBB

Visit the Full SBB Microsite

<https://go.gov.sg/moe-fsbb>



What is Full SBB?

Full SBB is part of MOE's ongoing efforts to nurture the joy of learning and develop multiple pathways to cater to the different strengths and interests of our students.



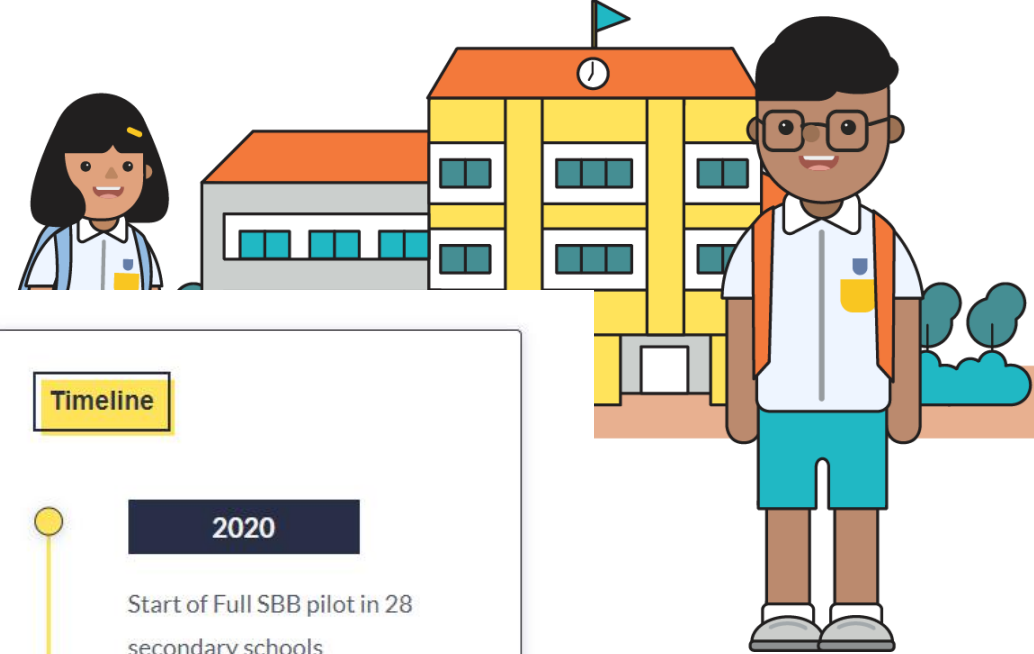
Secondary school experience under Full SBB

Find out more about Secondary 1 postings, form classes, subject offerings, Common Curriculum and other changes under Full SBB.



FAQ

Read this list of commonly asked questions and answers on Full SBB.



Timeline

2020

Start of Full SBB pilot in 28 secondary schools

2021

First cohort of Primary 6 students undergo new PSLE scoring and Secondary 1 (S1) posting system

2022-2024

Progressive roll-out of Full SBB to more secondary schools

2027

Find out more about Full SBB

Microsite



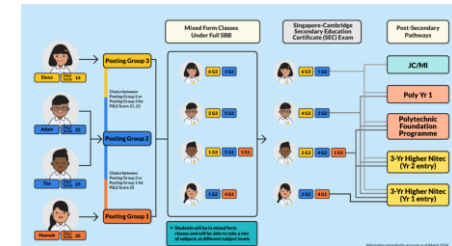
<https://go.gov.sg/moe-fsbb>

Interactive Site (updated Mar 2024)



<https://go.gov.sg/my-fsbb-path>

Infographic (updated Mar 2024)



<https://go.gov.sg/fsbb-pathways>

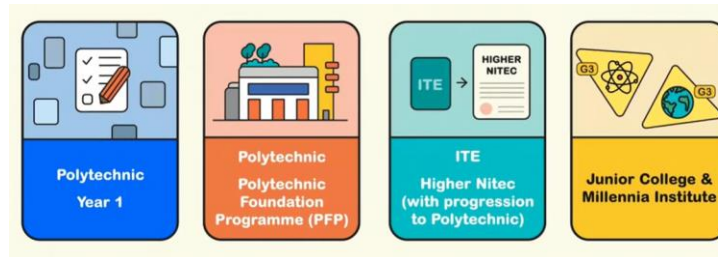
Find out more about Full SBB

MOE Explainer Video: Full SBB



<https://go.gov.sg/moe-fsbb-explainer>

MOE Explainer Video: Post-Secondary Pathways under Full SBB



<https://go.gov.sg/moe-fsbb-postsec>

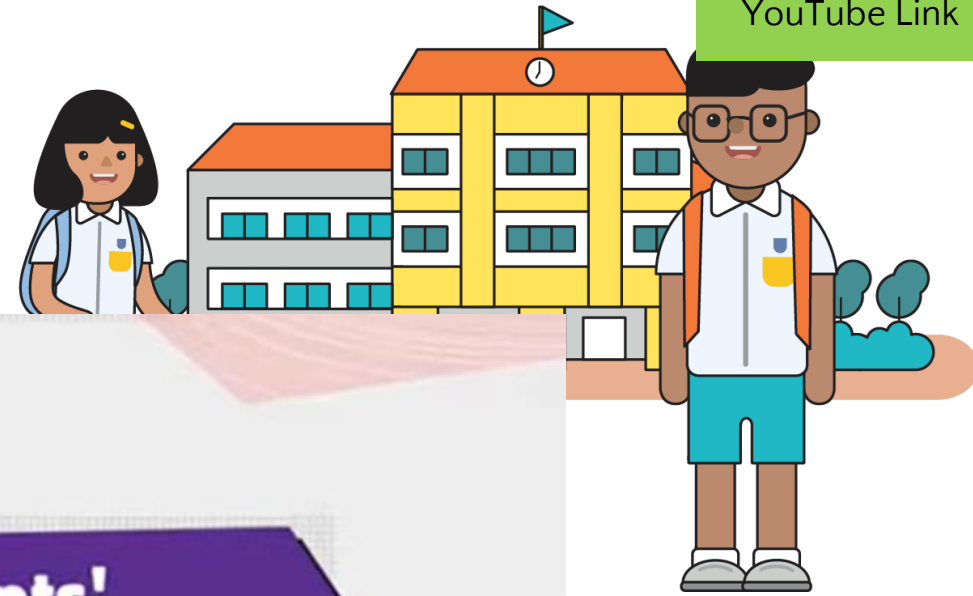
CNA Documentary: Full SBB: A New School of Thought



<https://go.gov.sg/anewschoooloftthought>

Video: Mixed Form Classes

YouTube Link



**Catering to students'
diverse strengths and
learning needs under Full SBB**

Interactive Site: Where will your path lead?

<https://go.gov.sg/my-fsbb-path>

Find out each student's
unique Full SBB
experience through
this interactive site.
(updated Mar 2024)

